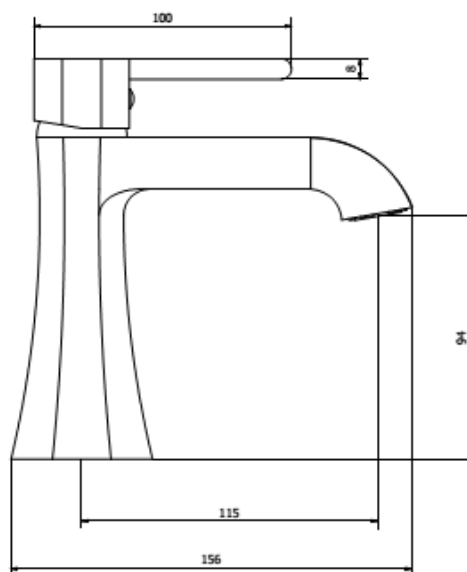




www.ibrubinetterie.it

BELMONDO ELLE
BL200

Range
Product



Product Description

Mono hole washbasin mixer with base integrated within the body as single-casted and a metal lever. 1-1/4" click-clack automatic pop-up waste included.

Available Finishings

| | | | | | | | |
|----------------|-------------------------------------|--------------|--------------------------|-----------|-------------------------------------|---------------|-------------------------------------|
| Chrome | <input checked="" type="checkbox"/> | Glossy Black | <input type="checkbox"/> | PVD Gold | <input type="checkbox"/> | Copper | <input type="checkbox"/> |
| Nickel Brushed | <input checked="" type="checkbox"/> | Matt White | <input type="checkbox"/> | Gold | <input checked="" type="checkbox"/> | Bronze | <input type="checkbox"/> |
| Glossy White | <input type="checkbox"/> | Matt Black | <input type="checkbox"/> | Rose Gold | <input checked="" type="checkbox"/> | YO - Your Own | <input checked="" type="checkbox"/> |

Tech Specifications

| | iB Standard | Possible Alternative | | | | | | | | | | | | | | |
|---|--|---|---------|-------|--------|-------|--------|--|---|---------|---------|---------|----------|----------|----------|----------|
| Cartridge | iB 25 mms Ceramic Discs Cartridge | Flow Restrictions – See below | | | | | | | | | | | | | | |
| Wall Hoses | Flexible Inox 3/8", 450 mms long | Flexible Inox 1/2", 450 mms long Copper Tails PEX Pipes Different lenghts available on request | | | | | | | | | | | | | | |
| Aerator | M 24X1 | | | | | | | | | | | | | | | |
| Flow Rate (+/- 10%) | <table><tr><td>1 BAR</td><td>9,5 l/m</td></tr><tr><td>2 BAR</td><td>13 l/m</td></tr><tr><td>3 BAR</td><td>19 l/m</td></tr></table> | 1 BAR | 9,5 l/m | 2 BAR | 13 l/m | 3 BAR | 19 l/m | <table><tr><td rowspan="7">Changing aerator or adding flow restrictors in the hoses, the following range of TOP flow rates can be achieved</td><td>2,5 l/m</td></tr><tr><td>6,0 l/m</td></tr><tr><td>8,5 l/m</td></tr><tr><td>10,0 l/m</td></tr><tr><td>12,0 l/m</td></tr><tr><td>15,0 l/m</td></tr><tr><td>18,0 l/m</td></tr></table> | Changing aerator or adding flow restrictors in the hoses, the following range of TOP flow rates can be achieved | 2,5 l/m | 6,0 l/m | 8,5 l/m | 10,0 l/m | 12,0 l/m | 15,0 l/m | 18,0 l/m |
| 1 BAR | 9,5 l/m | | | | | | | | | | | | | | | |
| 2 BAR | 13 l/m | | | | | | | | | | | | | | | |
| 3 BAR | 19 l/m | | | | | | | | | | | | | | | |
| Changing aerator or adding flow restrictors in the hoses, the following range of TOP flow rates can be achieved | 2,5 l/m | | | | | | | | | | | | | | | |
| | 6,0 l/m | | | | | | | | | | | | | | | |
| | 8,5 l/m | | | | | | | | | | | | | | | |
| | 10,0 l/m | | | | | | | | | | | | | | | |
| | 12,0 l/m | | | | | | | | | | | | | | | |
| | 15,0 l/m | | | | | | | | | | | | | | | |
| | 18,0 l/m | | | | | | | | | | | | | | | |
| Material | Brass According to CUZN35PB2AL-B(CB752S) Max Lead content: 1,6% | | | | | | | | | | | | | | | |
| Production | Main body is a single casted piece | | | | | | | | | | | | | | | |

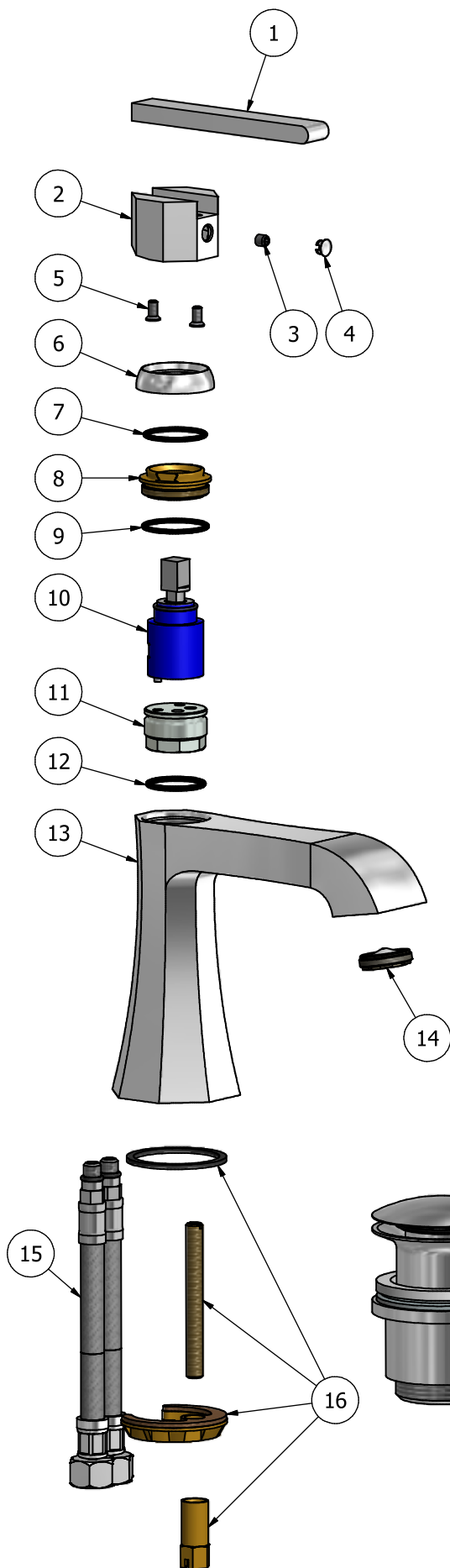


info@ibrubinetterie.it

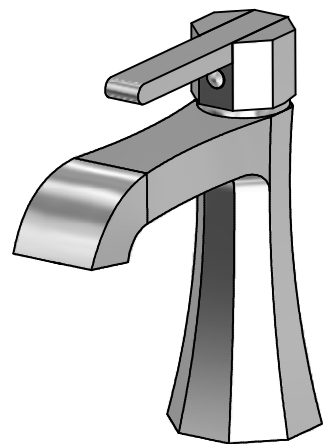
p.iva 01785230986
capitale sociale €420.000,00 i.v.

T +39 030 802101
F +39 030 803097


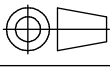
iB Rubinetterie SpA
via dei pianotti, 3/5 - 25068 sarezzo (bs) - Italy



| Elenco parti | | | |
|--------------|-----------|------------------------------------|----|
| ELEM | CODICE | NUMERO DI MAGAZZINO | QT |
| 1 | AC0011468 | Rectangular lever 15x8 H100 | 1 |
| 2 | AC0011467 | Handle H27 octagonal 37 | 1 |
| 3 | AQ0001100 | Grubscrew M5x5 p.p. | 1 |
| 4 | AQ0006650 | Plug cover Ø7 | 1 |
| 5 | AQ0010280 | Inox screw M4X8,5 | 2 |
| 6 | AC0012004 | Cartridge fixing nut chromed cover | 1 |
| 7 | AQ0006586 | OR 25.12x1.78 NBR 70 SH | 1 |
| 8 | AS0011182 | Fixing nut M30x1 H17 | 1 |
| 9 | AQ0010564 | OR 26.7x1.78 NBR 70 SH | 1 |
| 10 | AQ0013098 | Cartridge K25 OP S | 1 |
| 11 | AC0010810 | Connection piece Ø27X18 | 1 |
| 12 | AQ0010972 | OR 23x2 NBR 70 SH | 1 |
| 13 | CC0001985 | Octagonal body mixer | 1 |
| 14 | AQ0012140 | Perlator NP slim M24x1 | 1 |
| 15 | AQ0011013 | Flex inox M8x1 G3/8" L450 | 2 |
| 16 | AQ0010357 | Fixing set | 1 |
| 17 | AQ0009837 | Simplified rapid waste | 1 |



A termini di legge questo disegno non può essere riprodotto senza la nostra autorizzazione

| | | | | | |
|--|---------------------|----------------|--------------|--------------|---|
|  <p>www.vivenzim.com</p> <p>Via del Pianotti 3/5 25068 Sarezzo - BRESCIA tel. 030802101 fax. 030803097 www.vivenzim.com</p> | Tolleranze generali | | Peso | Scala | Formato |
| | ±0.1 | | | | ISO A4 |
| | Materiale | | | | |
| | Disegnatore | Data creazione | Approvato da | Approvato il |  |
| | Vivenzi M. | 16/06/2014 | | | |
| Denominazione | | | | | Codice |
| Esploso lavabo miscelatore BelMondo | | | | | KBL200CCXN_15 |

WARRANTY

all iB Rubinetterie SpA products are warranted for 10 years from the date of purchase, for the following cases:

- defects of casting, porosity and chrome plating
- operating defects caused by incorrect fabrication.

The warranty provides for the repair or replacement of products with fabrication defects recognized by our technical office.

There is no other type of compensation and the merchandise must be returned FOB our warehouse. The warranty only cover surface defects (scatches, dings, etc.) on fittings that have not been installed and used, returned in its original packaging with all components.

O-rings, gasket seals and components subject to wear proportional to use are warranted for 2 years.

The warranty is void in the following cases:

- error installing and putting the product into service.
- deterioration of chrome-plated surfaces due to use of cleaning products containing acids or abrasive substances
- deterioration of surface with finishes other than chrome plating. Their durability is, in fact, dependent on the user's care and gentleness of use.
- deterioration of the fitting due incorrect installation.
- improper repairs and maintenance performed without the company's prior authorization.

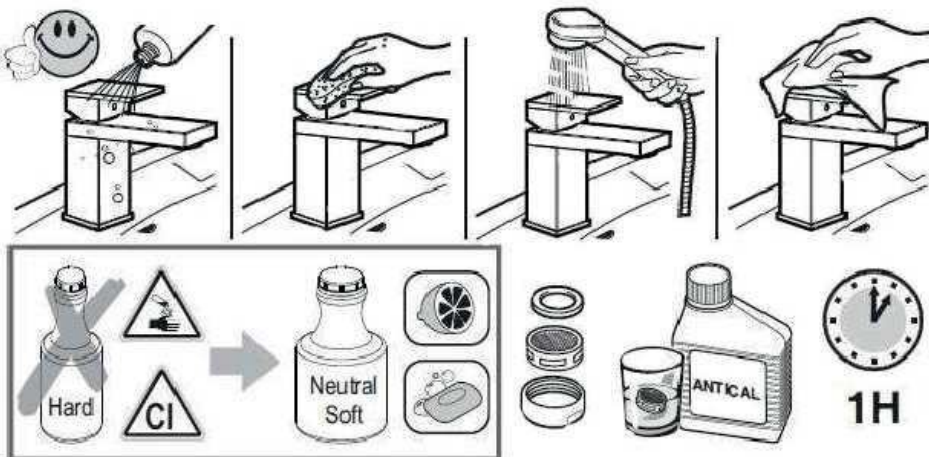
The warranty from iB Rubinetterie SpA is not renewable.

Cleaning:

We recommend cleaning chrome-plated and gold-finish surface with water and soap, using a soft cloth.

Do not use detergents that contain hydrochloric acid or abrasive substances.

Plastic parts must only be cleaned with soap and water and soft cloth.



IMPORTANT

Pressure & Temperature Requirements.

- * Hot and cold water inlet pressures should be equal.
- * Inlet pressure range: 150-1000 kPa
- * New Regulation: -500 kPa maximum operating pressure at any outlet within a building. (Ref. AS/NZS 3500.1-2003, Clause 3.3.4)
- * Maximum hot water temperature: 80°C.



iB Rubinetterie S.p.A.
Via dei Pianotti 3/5
25068 SAREZZO (BS) Italy
Iscr. Reg. Impr. BS 01785230986
R.E.A. BS 352087
P.IVA IT01785230986
Capitale Sociale € 420.000,00 i.v.
phone +39 030 802101
fax +39 030 803097
info@ibrubinetterie.it
www.ibrubinetterie.it

